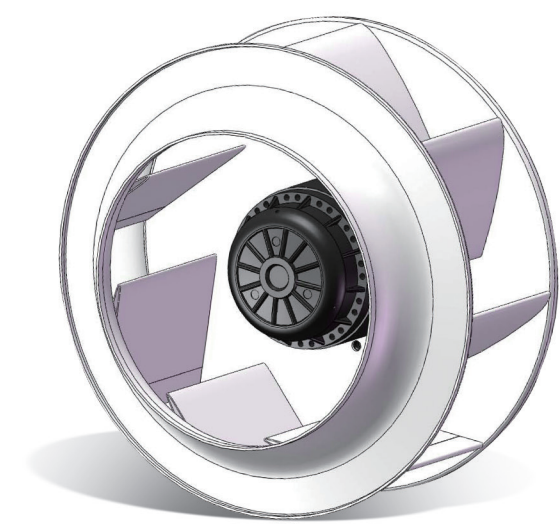


AC Centrifugal Fans: backward curved airfoil blade
离心机：后倾机翼型叶片设计



Benefits

- ✓ Composite material impeller with uncomplicated and proven technology
- ✓ Quick and simple installation
 - Wide size range: from 225mm to 630mm
- ✓ Expanded application range through double speed motors
- ✓ Efficient and cost-effective solution
 - Optimized noise performance with reduced tonal noise
 - Past highest mechanical strength tests in our lab
- ✓ Reliability and maintenance-freedom through many years of experience

产品优点:

- ✓ 合成材料叶轮，结构简单，技术已经验证
- ✓ 安装简单易行
 - 尺寸范围：225mm-630mm
- ✓ 双速电机使得应用范围更广泛
- ✓ 高效，性价比高的解决方案
 - 通过降低噪音达到最佳噪音性能
 - 内部实验室通过了最高机械强度测试
- ✓ 经多年使用验证，产品可靠，维护方便

Application:

应用:

Condenser	Transformer cooling
冷凝器	变压器冷却
Evaporator	Motor cooling
蒸发器	电机冷却
Cooling tower	Air conditions
冷却塔	空调
Dry cooler	Air compressor
干冷却器	空气压缩机
Blast freezers	Cold Storage
风冷柜	冷链及冷冻
Agriculture	
农业	



Local Production:

Not only reduce the cost of manufacturing and logistics,but make us more efficient in supply chain management,we can achieve healthy growth,we incorporate our supplier partners in development and continuous improvement easily and thus ensure our fans at a qualitively high standard.Our extensive knowledge and experience in China market make our fans and motors more compatible with actual working environment.

本土化生产

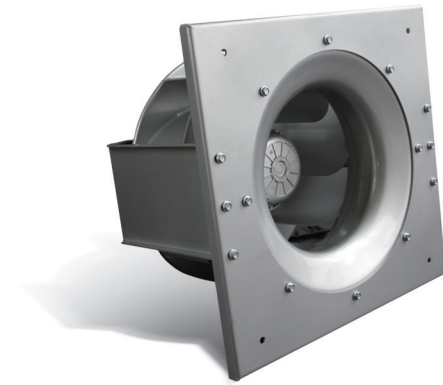
不仅降低了生产、运输成本，使我们整个供应链运行更加富有效率，更好的保证部件的品质，也让我们满足客户对于高性价比产品的追求以及对于货期及服务等方面的严格要求。同时，我们资深的本土设计人员，更加了解中国市场的情况，使产品更符合实际应用环境。



上海施依洛风机有限公司
地址：上海市松江区昆港公路 357 号 1 号楼
邮编：201614
Shiro Motor(Shanghai)Co., Ltd.
Building 1, No. 357 Kun Gang Road, Songjiang District, Shanghai, P.R. China 201614
Tel(HQ) : (+86-21) 5766 9715-18
Tel(BJ) : (+86-10) 6590 6121
Tel(SZ) : (+86-755) 8280 4213
Fax : (+86-21) 5766 9719
www.shiromotor.com



中国外转子风机领军者
China Leading Manufacturer of external rotor fan and customized ventilator solutions



SHIRO 施依洛

施依洛

Excellent Motor (100% Shiromotor design & production): 卓越的电机(100%施依洛电机设计及生产):



External Rotor Construction:

- ✓ Effective cooling system improves reliability and extends the life of the motor
- ✓ Higher motor efficiency and smaller product size/output relationships are better than with induction-type motors
- ✓ Easy speed control with external rotor motors by voltage reduction using fixed or variable resistors, autotransformers, or electronic speed controllers
- ✓ Better linearity of speed control has

外转子结构

- ✓ 有效的冷却系统有助于电机的可靠性并可延长电机的使用寿命
- ✓ 电机更高效，尺寸更精巧，比起工业型电机来输出更卓越
- ✓ 以固定的或可变化的电阻器，自耦变压器或电子速控器降低电压，使得外转子电机更易控制速度
- ✓ 较小的启动电流使电机更高效运转



Application:

应用:
Air conditioning & Ventilation
空调通风
Electronic Device
电力电子
Heating
供热
Renewable Energy
新能源
Clean Room
洁净室
Railway
机车
Refrigeration
制冷
Industrial Equipment Cooling
工业设备冷却



Product Features:

- ✓ Dual voltage (115/230 volt) motors
- ✓ Three phase motors and other special AC models rated from 24 to 440V are available on a special order basis
- ✓ Ambient Temperature range -65°~+80, specially meet Cold chain industrial field
- ✓ AC motors are thermally protected in accordance with international requirements
- ✓ 100% speed controllable by voltage, frequency, pole
- ✓ Low noise levels: Sound measurements are made in an anechoic chamber at nominal voltage with a microphone one meter from the air inlet

产品特点

- ✓ 双电压电机（115/230伏）
- ✓ 三相电机，特殊交流电模式，可提供24伏-440伏特殊电压产品订货
- ✓ 环境温度范围：-65° C ~ +80° C, 特别适合冷链产业的要求
- ✓ 电机过热保护，运行安全保障
- ✓ 依靠电压、频率、电极，让速度100%可控
- ✓ 低噪音水平：正常电压下，麦克风距进风口1米远的消声室进行



Long Product Life Cycle

- ✓ Compact design with up to IP55 class
- ✓ Extend insulated Copper winding
- ✓ The high temperature, non-aging, high viscosity lubricant
- ✓ SKF Bearing with advanced sealing design
- ✓ All fans and blowers are designed to meet existing CCC, RoHs, IEC standards & CE approval

更长的产品寿命周期

- ✓ IP55级更精炼的设计
- ✓ 延长绝缘铜绕组
- ✓ 耐温等级高于F级的绝缘涂层，使铜绕组的寿命更长
- ✓ SKF 轴承，优越的密封设计
- ✓ 所有风机设计均符合3C，RoHs，IEC标准要求及CE认证

Axial Fans blade based on Aerodynamics 空气动力学基础上的轴流风机叶片

Features include:

- ✓ Shiromotor deign offers the highest efficiency blade to date
- ✓ Installable in current Shiromotor hub design
- ✓ Premium Aluminum-Magnesium Alloy Material
- ✓ Individually balanced, interchangeable blades
- ✓ Superior “UV” protection
- ✓ Developed from the most severe strength testing program to date
- ✓ Initial size ranges 400mm up to 900mm
- ✓ Motors are available in 2, 4, 6 or 8 poles configurations
- ✓ Air flow goes up to 20,000M³/H



产品特点包含：

- ✓ 施依洛电机的设计让叶片持久高效运转
- ✓ 可安装在现有施依洛风机轮毂的设计
- ✓ 稀有的铝镁合金材料
- ✓ 独特的平稳，可替换的叶片
- ✓ 强紫外线防护
- ✓ 通过了目前为止最为严苛的强度测试
- ✓ 初始尺寸范围：400mm-900mm
- ✓ 电机可以2、4、6、8极调速
- ✓ 气流可到每小时20,000M³/H

High Efficiency Axial fans 高效轴流风机

Feature benefits

- Latest new Blade design with UV-proof plastic, Al-Mg, Steel for individual application
- High efficiency, low power consumption
- Adoptable design to customer needs: Special mold & casing designed to the energy-saving standard
- Low noise technology
- Accurate speed Control with low power consumption
- Tested & Perfected in our in-house develop center

功能效益

- 最新扇页设计，防紫外线工程塑料，铝镁合金，可用作特殊应用
- 高效，低能耗
- 可根据客户需求进行设计：特殊模型，节能标准外壳设计
- 低噪音技术
- 速度控制精确，耗能低
- 在机构内部开发中心进行测试，效果良好

