

Strategic Partner

It is now a well-known fact that fossil fuel supplies will run out and that the future lies in renewable, environmentally-friendly energy. As a result, wind energy has developed into a significant market. With last decade's explosive growth, China total installed capacity has become No.1 in the world. Subject to the monopoly of control technology, most of our wind turbine partners oriented on cost minimization and localization for more competitive market positioning. Shiromotor is a competent consulting partner in cooling and recirculation fields.

战略合作伙伴

众所周知，石油资源日渐枯竭，未来新能源应具备可持续性 & 环境保护的特性。因此，风能的发展恰恰符合了市场对新能源的需求。在过去十年爆炸性的发展中，中国已成为世界能源消耗最大的国家。但由于控制技术方面的垄断，大部分风电行业的合作伙伴倾向于更具市场竞争力的低成本，本土化的产品。施依洛公司在制冷和空气流通领域中是您绝佳的战略合作伙伴。

Focus on Customer, Innovation and One-Stop Solution

Wind energy plays an important role in the operating Shiromotor Group. We, as the leading local fan and cooling system supplier with matching ventilation technology, provide innovative solutions for your wind turbines. Being the strategic partner for many companies, we have accumulated strong experience in products for wind turbines as well as in application fields such as generator, nacelle, tower recirculation, converter cabinets, and transformer.

关注客户需求，勇于创新的一站式 解决方案

风能在施依洛集团的地位非常重要。作为国内风机冷却系统的领军者，我们掌握了空气流通的相关经验与技术，为您的风电应用提供开创性的解决方案。作为众多公司的战略合作伙伴，我们在风电产品的应用领域中，例如发电机、机舱、塔筒循环、变流柜、变压器等积累了丰富的经验。

Safety and Reliability

Efficient and comprehensive technology transfer is our goal. It's time to speed up the implementation of international technology into reliable, localized and more economic integrated solutions and products. In the past five years, thousands of our fans has been used in various parts of the wind turbine systems, all in good working conditions, welcomed by customers.

安全可靠

丰富的国际技术经验背景保证下，通过与客户技术团队的深入合作，提速技术转化，不断提供可靠的、本土化的、更经济的一体化方案及产品。在过去的5年间，已经有几千台风机应用于风电机组的各个部位，并且运转良好，深受客户的欢迎。

上海施依洛风机有限公司
地址：上海市松江区昆港公路 357 号 1 号楼
邮编：201614

Shiro Motor(Shanghai)Co., Ltd.
Building 1, No. 357 Kun Gang Road, Songjiang District, Shanghai, P.R. China 201614
Tel(HQ) : (+86-21) 5766 9715-18
Tel(BJ) : (+86-10) 6590 6121
Tel(SZ) : (+86-755) 8280 4213
Fax : (+86-21) 5766 9719
www.shiromotor.com

施 依 洛

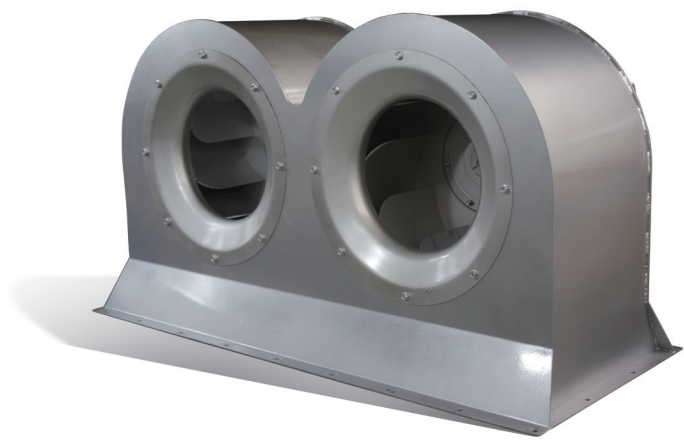


施依洛风机 · 风力发电行业应用
Shiro Motor Fans for Wind Turbines

Fans for wind turbine: 风机应用概况:



Fans for generator cooling 发电机冷却风机



AW

Key Features:
Standard drive Axial fans from the AW series

- a) Independent designed IPR
- b) High efficiency
- c) Compact design and high air flow
- d) Easy for installation and maintenance
- e) Air flow is up to 35000m3/h, diameter range from 315mm-1000mm
- f) Cost effective

- 主要特点:**
AW系列标准电机驱动轴流风机
- a) 自主设计
 - b) 高效率
 - c) 设计紧凑, 大流量
 - d) 易于安装及维修保养
 - e) 最大流量35000m3/小时, 直径范围 315mm-1000mm.
 - f) 性价比高

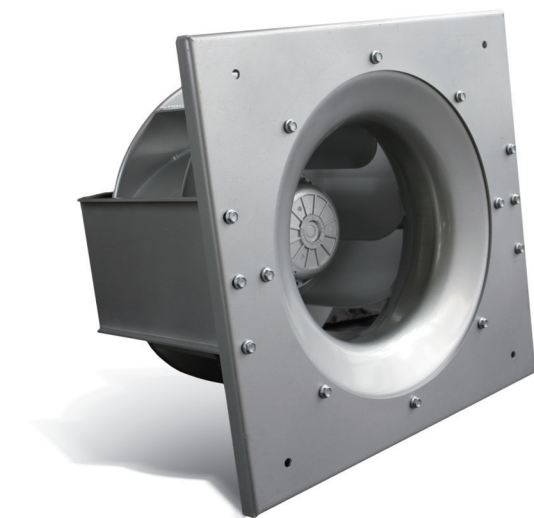
NSBB

Key Features:
Double inlet housing fans from the NSBD series

- a) Rated for medium flow rates and medium static pressures
- b) Special models for restricted space installations
- c) Low noise & energy saving
- d) Robust design with welded housings for high dynamic/vibrating loads
- e) Excellent corrosion protection

- 主要特点:**
NSBB系列的双进壳体风机
- a) 特殊工况的流量和静压要求
 - b) 用于有限安装空间的特殊设计
 - c) 低噪音, 高节能
 - d) 蜗壳为整体焊接结构, 使结构强度更高, 能承受较高的震动载荷
 - e) 卓越的防腐功能

Fans for nacelle recirculation 机舱循环风机



Key Features:
Compact dimensions
Aluminum sheet metal impeller
Low noise level and outstanding efficiency
Sizes from 450 to 800 mm, 100% speed controllable
Available in both air flow directions
Different blade angles

- 主要特点:**
紧凑的尺寸
铝制金属叶轮
低噪音高效率
尺寸在450-800mm, 速度100%可控
可提供两个不同转向
可提供不同的叶轮角度

Fans for tower recirculation cooling 塔循环冷却风机



Key Features:
a) Customized solution
b) Compact solutions with free-running impellers
c) Rated for high flow rates and small to medium static pressures

- 主要特点:**
a) 定制解决方案
b) 无蜗壳离心风机的紧凑解决方案
c) 额定高流量和低静压等级

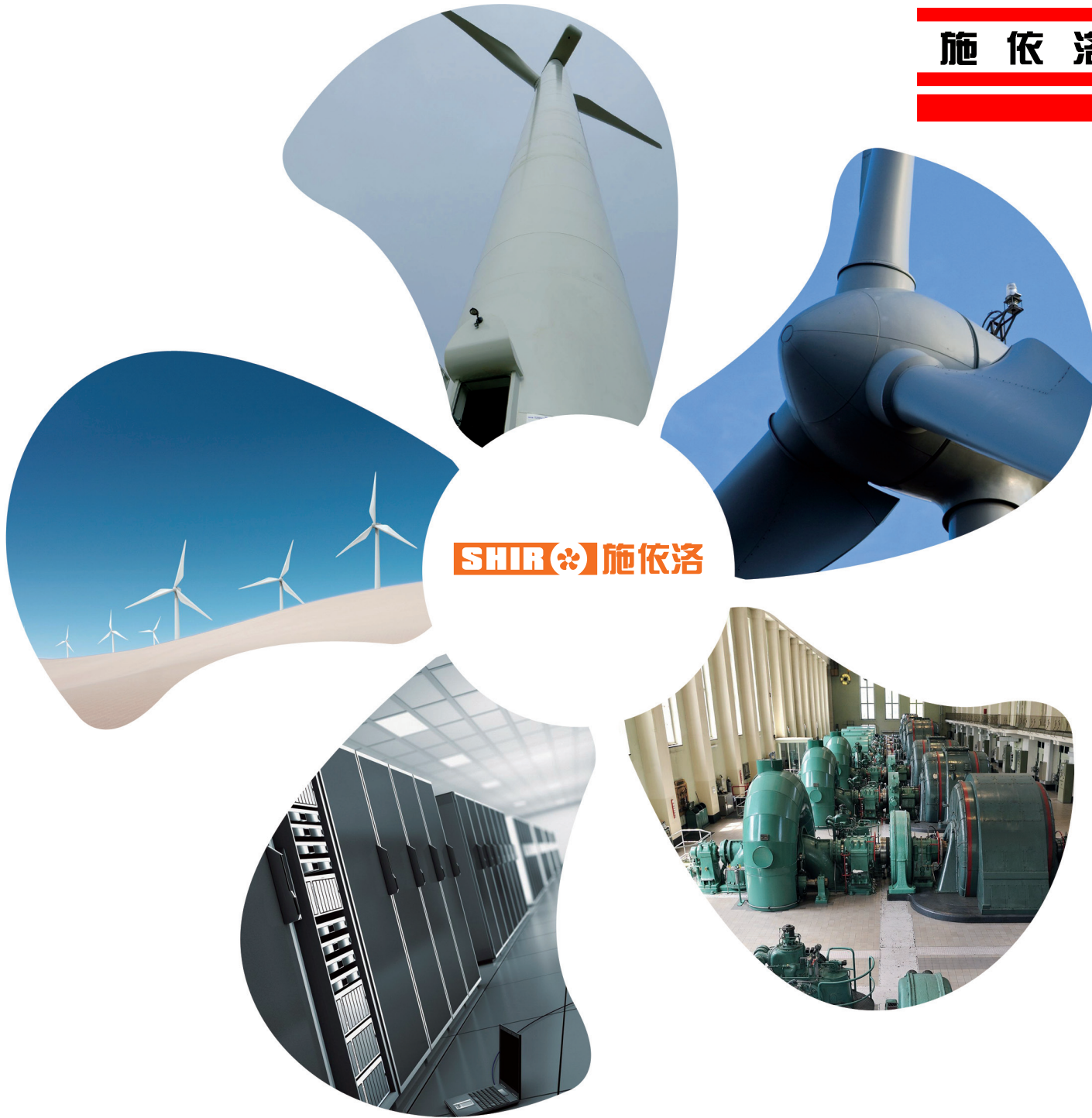
Fans for converter cabinet ventilation (Electronics Cooling) 变频柜通风用风机 (电子冷却)



Key Features:
a) Optimal motor cooling and a compact design
b) Voltage controllable external rotor motor
c) High efficiency
d) Low noise level with a high & medium static pressure
e) Impeller diameter range from 200mm to 630mm

- 主要特点:**
a) 优秀的电动机冷却, 紧凑的设计
b) 电压控制的外转子电机
c) 高效能
d) 低噪音水平下的中高静压
e) 叶轮直径范围从200-630mm

施依洛



系统运行风场区域简介:
甘肃酒泉片区
通辽片区
乌兰察布片区
沿海片区
云贵高原片区

Committed to technology and quality

As our products widely used in wild environment wind farms, we accumulated great experience in wind applications, especially proven in tough climate conditions in China. Shiromotor has been developing and producing sophisticated high-quality ventilation systems in our factory. These systems cover areas such as.

致力于产品技术和质量

由于我们的产品广泛运用于野外风场环境, 我们积累了丰富的风能设备的应用经验。特别是在我国气候条件恶劣地区的成功经验, 确保施依洛工厂研发具有针对性的风机系统及解决方案, 并生产成熟高质量的风机系列产品。